

# Town Hall - North High School

April 24, 2019

Grosse Pointe Public School System

## Strategic Plan

Promote Innovation → Maximize Potential → Embrace Community

# Town Hall Agenda

1. Welcome and Introduction
2. Brief Overview of the Reconfiguration Process to Date ~ 20 minutes
3. Walking Table Exercise using 4A Protocol ~ 20 minutes
4. Q&A ~ 20 minutes
5. Adjourn by 8 p.m.

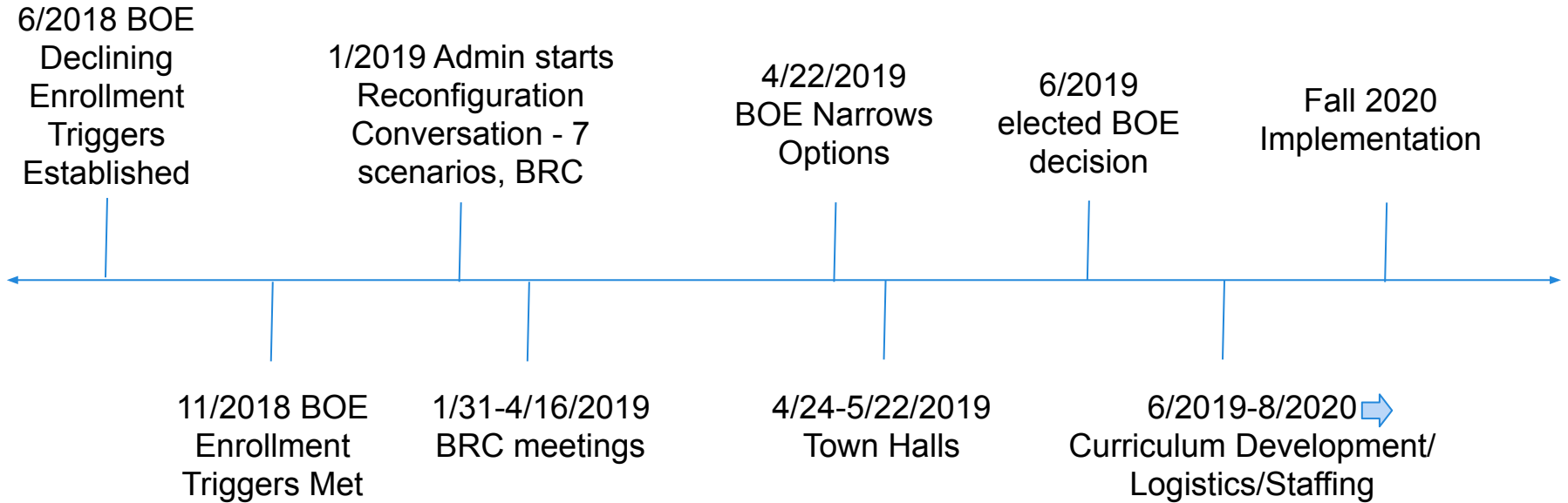
# Purpose of Town Halls

Similar to the Blue Ribbon Committee (BRC), the purpose of the Town Halls in each GPPSS school is to serve as a filter or focus group for ideas that would be analyzed and discussed by a broad group of parents, staff and community members.

For tonight, we are committed to:

- Realize the magnitude of this conversation
- Have varied opinions and philosophical beliefs.
- Will participate in active listening and stay engaged
- Speak from our own experiences and truth instead of generalizing
- Respect ideas even those not in sync with our current practice/belief
- Work from a lens that focuses on students

# Timeline of Process



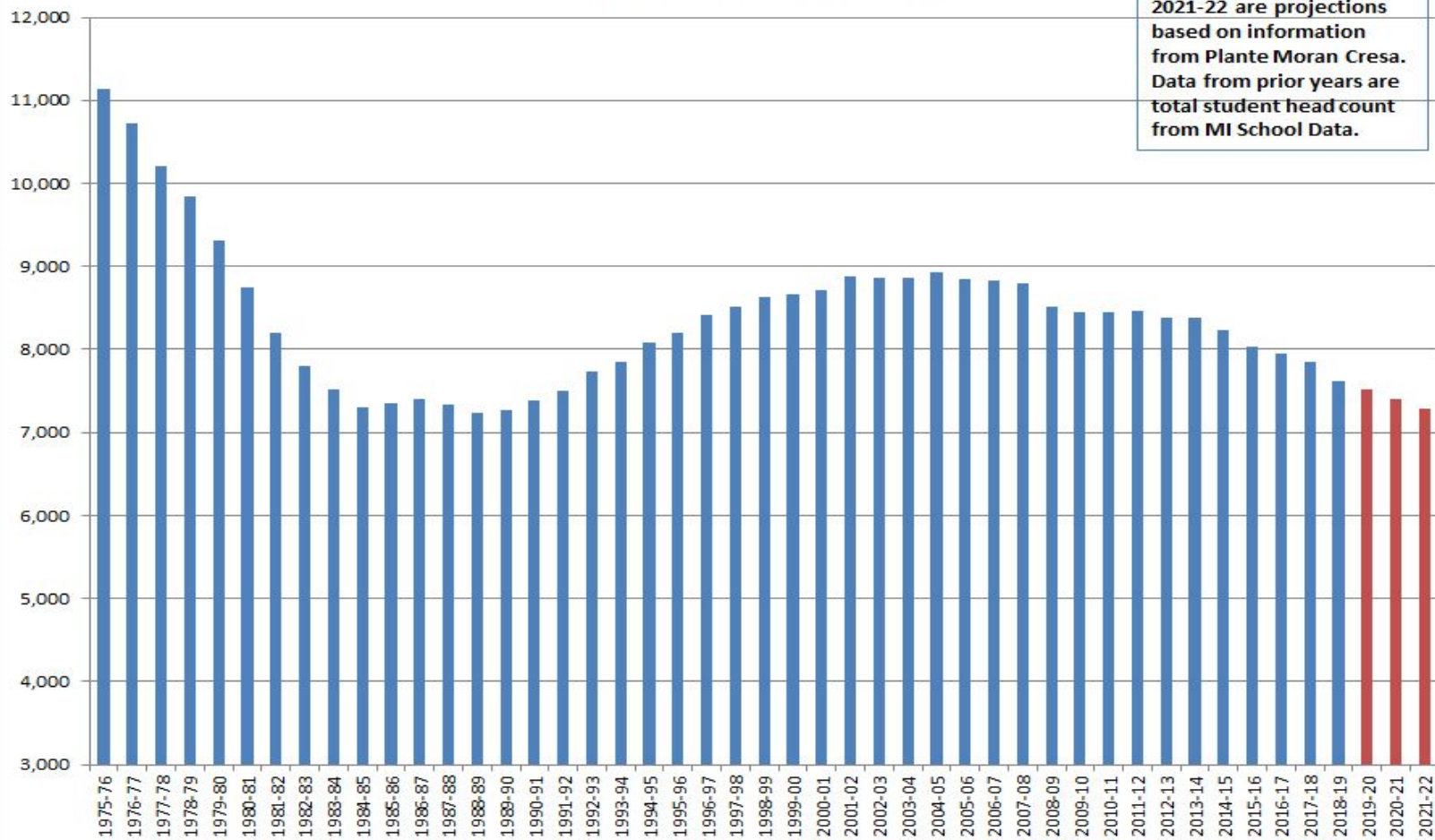
# GPPSS Blue Ribbon Reconfiguration Committee - Charge

The GPPSS Blue Ribbon Reconfiguration Committee was charged with the following:

*Propose a reconfiguration plan for facility usage and grade configuration to be implemented in GPPSS starting no earlier than the **2020-21 school year**. This plan should consider all relevant factors identified by the committee including meeting the target of substantial structural financial savings. However, the best interest of students and **focusing on expanding opportunities for all students while maintaining excellence** shall be at the center of the committee's work. The plan should be specific including identifying facilities and options.*

## GPPSS Enrollment History

Note: Data for 2019-20 - 2021-22 are projections based on information from Plante Moran Cresa. Data from prior years are total student head count from MI School Data.



# Basic Considerations of Reconfiguration

As administration reviewed the mechanics of possible reconfiguration scenarios, the following were considerations:

- Ensuring ES student capacity exists geographically across the District
- Maintaining buildings with more sq. footage typically addresses future capacity needs
- ECC must be housed on the first floor of any building, unless specific fire and safety conditions are met to allow for 2nd floor fee based programming (special education early childhood education must remain on the first floor)
- Many variables (some easily identified & some not) exist when considering which buildings to possibly close
- Reconfiguration will cause a ripple effect on attendance areas
- For the sake of this presentation, elementary schools are divided into North and South end as follows:
  - North - Ferry, Mason, Monteith and Poupard
  - South - Defer, Kerby, Maire, Richard and Trombly

# Four Lenses Used by BRC

## Increase Educational Opportunities

- Create new opportunity for students
- Maintain our current class sizes
- Expand and maintain rigorous, engaging opportunities for all students

## Building Capacity

(BOE has target of 80 % capacity for each building)

- What is configuration scenario capacity percentage at the elementary level
- What is configuration scenario capacity percentage at the secondary level

## Impact on Community

- Impact on current and future students
  - Walkability
- Impact on current communities
  - Neighborhood schools
  - Impact of obsolete buildings
- Provide a community school concept for students
  - Attending school with neighborhood friends

## Financial Savings

- Provide operational savings
  - Closing buildings, pools
  - Create cost avoidance
- Repairs, allocation of bond money
  - Cost avoidance
- Generates one-time savings
  - Sale of buildings
- Creates the possibility for future revenue
  - Expand preschool, facility rentals, potential for new homes (students)/businesses (tax base)



# Board direction April 22

At their televised meeting April 22, the elected board narrowed options for input at Town Halls:

1. **Keep Early Childhood Center (ECC) at Barnes** and explore expansion through satellites and/or renovations to use second floor
2. Use **K-4, 5-8** grade configuration
3. **Close 2 elementary schools** (one North end, one South end) 2020-21, knowing this may be Step 1 in the process if enrollment continues to decline

# K - 4 Considerations

| <b>What We Know About K-4</b>  | <b>What We Don't Know Yet About K-4</b>   |
|--|---|
| Opportunity to Focus on Literacy and Numeracy  | How will specials work in the K-4 environment?  |
| Better opportunity for students to have heterogeneous classes with similar learning partners | Is the current specials rotation of PE, art, vocal music and media/Spanish the best choices for K-4 students? |
| Will maintain our current excellent class sizes, with a decrease in class size variance      |   |
| Provides additional classroom space for PreK satellite locations                             |   |

# 5 - 8 Considerations

| <b>What We Know About 5-8</b>   | <b>What We Don't Know Yet About 5-8</b>                                |
|---|--|
| 5th grade experience similar to current experience  | How will electives be structured for 5th grade?                        |
| 6th grade more of a hybrid between typical elementary and typical middle school experience (gentler transition) | How will arrival and dismissal procedures work for 5th grade students? |
| 5th grade expanded access to mental health supports   | How will electives be structured for 6th grade?                        |
| 5th grade additional opportunities to explore electives and access MS facilities                                |  |
| 5th grade students will be housed in a focused area of each middle school building                              |  |
| 5th grade students will not follow a bell schedule (meaning changing classes in a typical MS fashion)           |  |

# 2019-20 Next Steps K-4, 5-8

## **Work over the 2019-20 school year to prepare for transition:**

- Provide more detail on how to separate 5th and 6th and increase educational options
- Continue to meet with teachers for input
- Identify curriculum development needs
- Identify curricular options for K-4, 5-6, 7-8
- Assess staff credentials
- Provide more detail on where special education self-contained classrooms would be
- Provide more detail on Barnes renovations
- Assess MS logistics - lunch, restrooms, recess, entrance/exit, schedule
- Address social concern for 5<sup>th</sup> grade at middle school
- Keep reminding community projections are estimates
- Arrange transition activities to merge PTOs and build community

# Middle School Reconfiguration Results

Given that in a K-4 & 5-8 configuration GPPSS would maintain 3 middle schools the following would be the projected 2020-21 enrollment and capacity for each of the three middle schools. In addition, the BRO and PAR pools would be maintained. The PIE pool would be closed.

| School   | Grades | 2020-21<br>Estimated<br>Enrollment | % of Capacity | New Attendance<br>Area Would<br>Include Students<br>Currently<br>Attending: |
|----------|--------|------------------------------------|---------------|---|
| Brownell | 5 - 8  | 615                                | 66%           | 100% BRO  |
| Parcells | 5 - 8  | 829                                | 91%           | 100% PAR  |
| Pierce   | 5 - 8  | 630                                | 62%           | 100% PIE  |

# Scenario Summary Page

Based on feedback from the Board of Education, four specific scenarios are currently being vetted by the Town Hall process:

| <b>Scenario Title</b> | <b>North End Building Closed?</b> | <b>South End Building Closed?</b> |
|-----------------------|-----------------------------------|-----------------------------------|
| Scenario E.1          | Mason                             | Trombly                           |
| Scenario F.1          | Poupard                           | Trombly                           |
| Scenario K            | Mason                             | Maire                             |
| Scenario L            | Poupard                           | Maire                             |

# Scenario

| New School Configuration:          |                                   |                                    |                  |   |  |                                 | Building Use: |
|------------------------------------|-----------------------------------|------------------------------------|------------------|---|--|---------------------------------|---------------|
| School                             | Grades                            | 2020-21<br>Estimated<br>Enrollment | % of<br>Capacity | New<br>Attendance<br>Area Would<br>Include<br>Students<br>Currently<br>Attending: | General<br>Education<br>Classroom<br>Usage |                                 |               |
|                                    |                                   |                                    |                  |   |  | <b>Obsolete Buildings:</b>      |               |
|                                    |                                   |                                    |                  |   |  |                                 |               |
|                                    |                                   |                                    |                  |   |  |                                 |               |
|                                    |                                   |                                    |                  |   |  |                                 |               |
|                                    |                                   |                                    |                  |   |  | <b>Administrative Services:</b> |               |
| Total ES Enrollment Summary        |                                   |                                    |                  |   |  |                                 |               |
| Total Estimated 2020-21 Enrollment |                                   |                                    |                  | ES Capacity   |  |                                 |               |
| Total ES Capacity                  |                                   |                                    |                  | ES Open Seats   |  |                                 |               |
| Financial Savings:                 |                                   |                                    |                  | Notes:  |  |                                 |               |
|                                    | Annual<br>Operationa<br>l Savings | Bond<br>Savings                    | Land Value       |   |  |                                 |               |
|                                    |                                   |                                    |                  |   |  |                                 |               |
|                                    |                                   |                                    |                  |   |  |                                 |               |
|                                    |                                   |                                    |                  |   |  |                                 |               |
|                                    |                                   |                                    |                  |   |  |                                 |               |
|                                    |                                   |                                    |                  | <b>Question Review</b>  |  |                                 |               |
|                                    |                                   |                                    |                  |   |  |                                 |               |
| <b>Total<br/>Savings</b>           |                                   |                                    |                  |   |  |                                 |               |

# Table Exercise - 4A Protocol

|             |            |
|-------------|------------|
| Assumptions | Aspire To  |
| Agree With  | Argue With |



# Q&A

- Submit questions on 3x5 card
- Need volunteer from community to help sort (remove duplicates)
- Principal will read question so all can hear
- Anything not answered tonight will be answered in the FAQ

# Town Halls

Thursday, 4/25 - Kerby Gym 6:30 p.m.

Monday, 4/29 - Mason Gym, 6:30 p.m.

Tuesday, 4/30 - South Auditorium, 6:30 p.m.

Wednesday, 5/1 - Richard Gym, 6:30 p.m.

Thursday, 5/2 - Ferry Gym, 6:30 p.m.

Monday, 5/6 - Parcels Auditorium, 6:30 p.m.

Tuesday, 5/7 - Brownell MPR, 6:30 p.m.

Wednesday, 5/8 - Monteith Gym, 6:30 p.m.

Thursday, 5/9 - Maire Gym, 6:30 p.m.

Tuesday, 5/14 - Trombly Auditorium, 6:30 p.m.

Wednesday, 5/15 - Poupard Gym, 6:30 p.m.

Thursday, 5/16 - Defer Gym, 6:30 p.m.

Tuesday, 5/21 - Pierce Auditorium, 6:30 p.m.

Wednesday, 5/22 - Barnes Gym, 6:30 p.m.

Board Decision in June 2019 for Implementation in the 2020-21 School Year